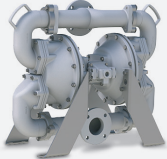


➤ **Heavy Duty Ball Valve**

SB1	0 to 42 gpm
HDB1½	0 to 90 gpm
HDB2	0 to 135 gpm
HDB3	0 to 260 gpm
HDB4	0 to 260 gpm



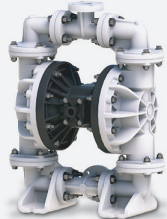
➤ **Heavy Duty Flap Valve**

SA1	0 to 42 gpm
HDF2	0 to 140 gpm
HDF3	0 to 135 gpm
HDF4	0 to 260 gpm



➤ **Standard Duty Metallic**

E02	0 to 4.4 gpm
S05	0 to 15 gpm
S1F	0 to 45 gpm
S15	0 to 106 gpm
S20	0 to 150 gpm
S30	0 to 235 gpm



➤ **Standard Duty Non-Metallic**

PB¼	0 to 4 gpm
S05	0 to 14 gpm
S07	0 to 23 gpm
S10	0 to 23 gpm
S1F	0 to 45 gpm
S15	0 to 100 gpm
S20	0 to 160 gpm
S30	0 to 238 gpm



➤ **Containment Duty Metallic**

ST1-A	0 to 42 gpm
ST1½-A	0 to 90 gpm



➤ **High Pressure 2:1**

EH2 Ball Valve	0 to 42 gpm
SH2 Flap Valve	0 to 90 gpm

Ex	Pump Materials											Elastomers							
	CP	PP	K	NY	CA	AL	CI	SS	HC	CV	N	B	E	V	T	H	S	PU	
*						Ex		Ex	Ex			*	*	*	*	*	*		
*						Ex	Ex	Ex	Ex			*	*	*	*	*	*		
*						Ex	Ex	Ex	Ex			*	*	*	*	*	*		
*							Ex	Ex				*	*	*	*	*	*		
*							Ex					*	*	*	*	*	*		

*						Ex		Ex				*	*	*	*	*	*	
*						Ex	Ex	Ex				*	*	*	*	*	*	
*						Ex	Ex	Ex	Ex			*	*	*	*	*	*	
*						Ex	Ex	Ex	Ex			*	*	*	*	*	*	
*						Ex	Ex	Ex	Ex			*	*	*	*	*	*	

*								Ex							*	*	*	
*						Ex		Ex	Ex			*	*	*	*	*	*	
*						Ex	Ex	Ex	Ex			*	*	*	*	*	*	
*						Ex	Ex	Ex	Ex			*	*	*	*	*	*	
*						Ex	Ex	Ex	Ex			*	*	*	*	*	*	
*						Ex	Ex	Ex	Ex			*	*	*	*	*	*	

*		*	*		Ex										*	*	*	
*	Ex	*	*	*	Ex				Ex		*	*	*	*	*	*	*	*
		*	*	*							*	*	*	*	*	*	*	*
		*	*	*							*	*	*	*	*	*	*	*
*	Ex	*	*						Ex		*	*	*	*	*	*	*	*
	Ex	*	*												*	*	*	*
	Ex	*	*												*	*	*	*
		*	*												*	*	*	*

*						Ex		Ex	Ex						*	*	*	
*						Ex	Ex	Ex	Ex						*	*	*	

*							Ex	Ex							*	*	*	
*							Ex	Ex							*	*	*	

- | | | |
|--------------------------------------|-----------------------------|--------------------------|
| CP = Conductive Polypropylene | AL = Aluminum | E = EPDM |
| PP = Polypropylene | CI = Cast Iron | V = FKM |
| K = PVDF | SS = Stainless Steel | T = Virgin PTFE |
| NY = Nylon | HC = Alloy C | H = Hytrel® |
| CV = Conductive PVDF | N = Neoprene | S = Santoprene® |
| CA = Conductive Acetal | B = Buna | PU = Polyurethane |

- Sealless
- Handles Abrasives & Corrosives
- Self-Priming
- Moves Heavy Viscosities
- Infinitely Variable Flow
- Runs Dry without Damage
- Deadheads No Bypass Needed
- No Meters
- Groundable
- Gentle to Shear Sensitive Materials
- Available with NPT or Flanged connections on most size

* ATEX 100a Compliant I M2 c T5 II 2GD T5

SludgeMaster™



Submersible air-powered pump. Rugged, portable trash pump handles mud, twigs, sand, sludge. Solids to 1½", weighs only 49 lbs., fits through a 14" opening. Flows to 300 gpm.

PortaPump®



Submersible battery-powered pump. Operates via cables and battery clips from any 12-volt truck or car battery. Weighs only 33 lbs., fits through a 10" opening. Flows to 43 gpm.

A great pump needs a "system" to last a long time and run efficiently

always
working.

Sales, Technical
Support and
Stocking Locations
Nationwide

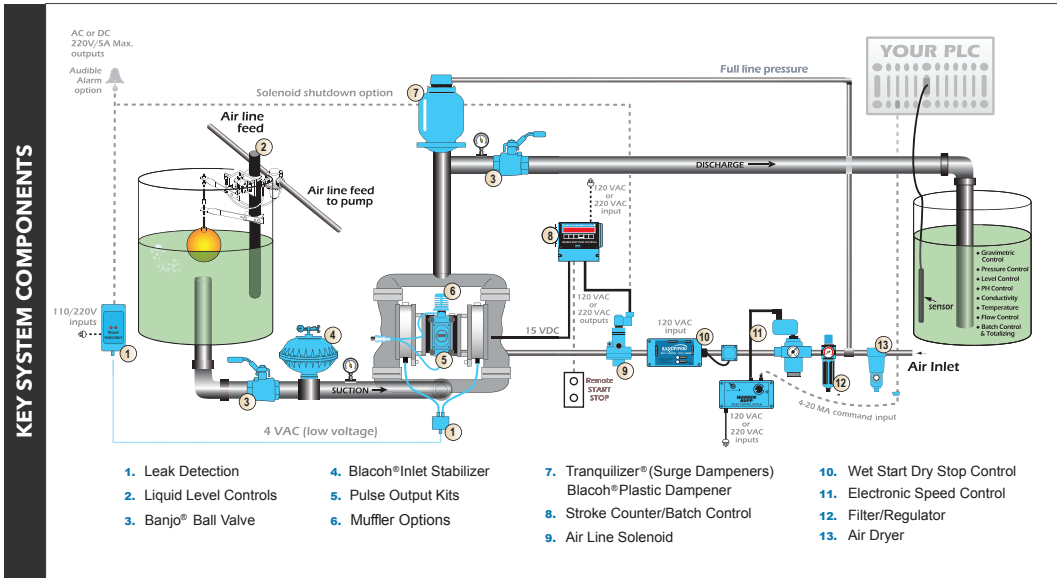
Paragon Great Lakes
5775 10 Mile Road
Warren, MI 48091

Paragon Pacific
7380 Eastgate Rd.
Suite 180
Henderson, NV 89011

Paragon Atlantic
1440 Westinghouse Blvd.
Suite P
Charlotte, NC 28273

Paragon Canada
6535 Millcreek Dr.
Unit 47, Mississauga,
ON L5N 2M2

PARAGONTECH.com



Ask us what you need for your system. We have trained salespeople and our **Tech Support Team** is available to assist with application support and product(s) selection.



Business Card Here

800.229.5350

PG-3213