

## Industrial Repair Solutions

### Precision Spindle Repair

**Superior Spindle has joined the SunSource family of companies!** For over 40 years, Superior Spindle Service has been dedicated to providing high-quality spindle repair, spindle replacement, and spindle rebuilding services for CNC machines across multitude of markets including Aerospace, Automotive, Agriculture, Mold, and others. They are a full-service remanufacturer offering complete spindle services including vibration analysis, failure diagnosis, repair to OEM specifications, as well as full replacement. Extensive in-house capabilities allow for reverse engineering, machining, precision grinding, motor rewinding, and complete testing of all electronic components, ensuring the highest quality while controlling costs and delivery time.

**Superior**  
spindle services

*A SunSource Company*



#### Let us Handle your Next Spindle Repair

Upon receipt of your spindle, it will undergo an extensive evaluation process to determine its exact cause of failure. Each quote includes a detailed failure analysis report for your review, and upon your approval, your spindle will be completely rebuilt and recalibrated in a class 10,000 HEPA climate controlled clean room. Every spindle is dynamically balanced and tested to allow for proper run in.



#### The Benefits of Working with Superior Spindle

- KESSLER Partner with factory-trained technicians
- (2) Class 10,000 HELPA climate-controlled clean rooms
- Documented quality results
- 12-month warranty
- ISO 9001:2015
- Emergency repair service available
- Store room management services



**Top Manufacturers Supported:** Bryant, Chiron, Colonial, Cincinnati, Gamfor, Gros-Ite, GMN, Heald, Hessap, Hofmann, Hurco, Kessler, Makino, Mazak, Mitsubishi, Mori Seiki, OKK, Okuma/Howa, Omlat, Pope, Setco, Studer, Toyoda and many more!

Authorized by:

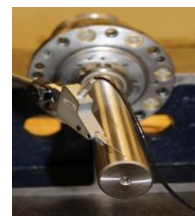


**KESSLER**



**Gros-Ite**

*Precision Spindle*



[www.paragontech.com](http://www.paragontech.com) | 800-229-5350 | Multiple Locations to Serve You